



UNIVERSITY/COLLEGE

Commercial Aluminum Windows and Doors | Commercial Vinyl Windows and Doors



Credit: Parallel Co. / parallel.co.com

Products and Project References

www.QuakerCommercialWindows.com

Higher Education projects are anything but academic.

There are almost 6,000 colleges and universities in the United States. Each campus has its own history...its own appearance...its own ambience. So when a learning institution has a building project, you can bet the building design will be unique. This is where Quaker excels.

While each learning establishment differentiates itself in many ways, almost every university/college construction project contains many of the same traits:

- shorter time frames to complete the job
- an acute attentiveness to delivery schedules
- maximum safety features with full-functionality
- the ability to withstand everyday wear and tear
- high energy-efficiency where needed
- And just as, if not most important, a keen eye kept on allotted budgets

At Quaker, we fully understand all of these aspects and that's why we're so effective when working with colleges and universities. Whether it's constructing a new dormitory or revitalizing an historic campus centerpiece, we have the products and the experience to make your next project pass with flying colors.

Champions Hall
Student Housing
Florida State University
Tallahassee, FL
Developers: Seminole Boosters, Inc. and
Capstone Development Partners
Architect: Elliott Marshall Innes Architects
Contractor: Cook Brothers Inc.
Glazing Contractor: American Glass & Mirror



Credit: Cook Brothers Construction



www.QuakerCommercialWindows.com

The Quaker Difference: More than meets the eye.

What distinguishes Quaker from all other window companies isn't always in plain sight. It's The Quaker Difference -- tangible and intangible assets working together to form the most sought-after windows in the market.

- It's a standard of craftsmanship and engineering excellence that we build into every product, distinguishing us from all other window companies in America.
- It's shying away from testing at entry-level, gateway sizes. Instead, we test using exaggerated and even maximum sizing. This ensures the entire scope of a product's sizing will meet the advertised rating.
- It's our "can-do" attitude toward custom projects. Never is a job too custom for Quaker. Our options and accessory choices allow us to do what others can't.
- It's multiple quality checks implemented throughout the manufacturing process to guarantee a paramount product.
- It's our state-of-the-art powder paint facility, one of the largest in the U.S., which allows us to control the quality and consistency of our finish, unlike manufacturers that outsource their painting. As well, it supports our "green" initiatives by employing environmentally-friendly coatings that emit nearly zero VOCs into the air.
- It's employing thicker glass panes which will both lower the amount of stress cracks and raise your ability to control sound intrusion.
- It's professional manufacturing specialists, some with more than 40 years of window experience, providing unparalleled attention to detail from start to finish.
- It's a sales team fully-dedicated to the commercial building sector, working hard to ensure that the product you need is the product you order.
- It's doing more than just selling windows and doors. It's finding the right product solution for your project.



That's *The Quaker Difference*.

The Bridge on Forbes
Student Housing
University of Pittsburgh
Pittsburgh, PA
Developer: PLDC Land Owner LLC
Architect: Desmone Architects
Contractor: Rycon Construction
Glazing Contractor: Specified Systems



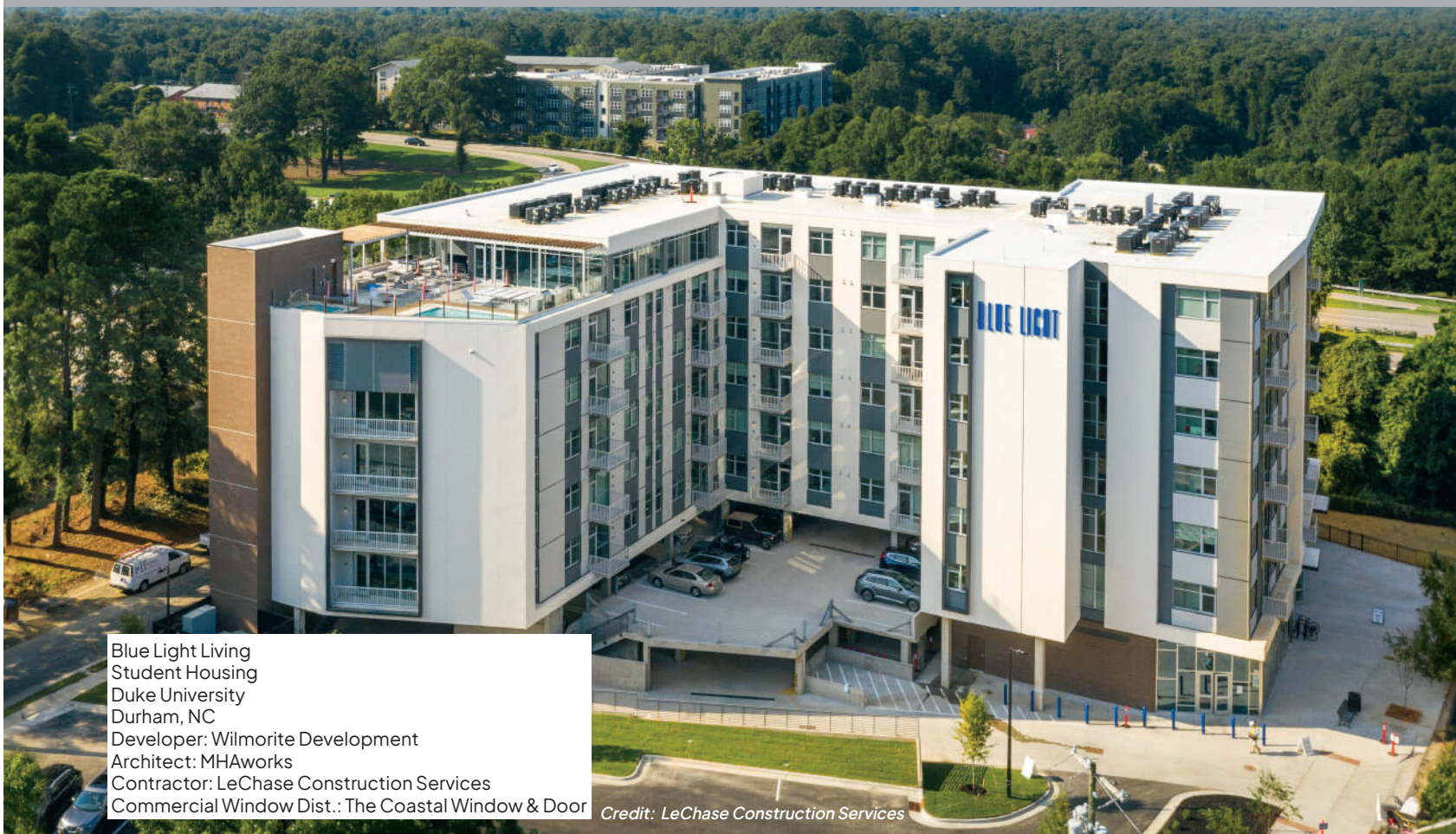
Credit: thebridgeonforbes.com

800-347-0438



Aluminum Windows and Doors

Hung | Casement | Project-Out | Slider | Fixed | Doors



Blue Light Living
Student Housing
Duke University
Durham, NC
Developer: Wilmorite Development
Architect: MHAworks
Contractor: LeChase Construction Services
Commercial Window Dist.: The Coastal Window & Door

Credit: LeChase Construction Services

FEATURES:

- CW to AW ratings
- Architecturally extruded aluminum
- All products include a thermally-broken design
- Patented OptiCore™ technology for enhanced thermal efficiency (C600/C605 only)
- Modern, squared sash frame or Traditional/Historic sash frame (*availability varies based on series and model*)
- ¾" to 1 ⅜" I.G. with warm-edge spacer
- Commercial-grade hardware
- Full line of operating and fixed window models
- Sliding and Terrace Door models
- Product lines perfect for both New Construction and Replacement applications

BENEFITS:

- Industry-leading thermal efficiencies
- Green initiatives built into every product
- In-house powder coat facility means no lengthy lead times
- Custom color capabilities
- Split color option i.e. separate colors on exterior and interior (C600/C605 only)
- Great STC/OITC performance
- Blinds/Panel option (C600/C605 and E600 only)
- Standard and custom sizing for all models
- Impact and Florida Building approved products

Aluminum Product Selection Guide

Model	Series	Frame Depth	Structural Test Rating	Test Size	Air Infiltration	Water Resistance	U-Value Range [#]	SHGC Range [#]	STC Range ^x	OITC Range ^x
Casement	C600/C605	4 1/8"	Up to AW100	48" x 84"	<.10	15.04	.19-.48	.11-.44	28-41	23-34
	E600	3 1/4"	Up to AW100	36" x 72"	<.10	15.04	.32-.48	.12-.26	31-44	25-34
	H450	3 1/4"	CW90	36" x 60"	<.10	12.11	.39-.48	.14-.48	34-37	29-32
	M600	3 1/4"	AW-PG70	36" x 60"	<.10	15.04	.39-.48	.19-.29	29-43	23-31
Project-Out	C600/C605	4 1/8"	AW100	60" x 36"	<.10	15.04	.19-.44	.11-.44	34	27
	E600	3 1/4"	AW100	60" x 36"	<.10	15.04	.32-.48	.10-.41		
	H450	3 1/4"	CW70	60" x 36"	<.10	12.11	.40-.60	.14-.59		
	M600	3 1/4"	AW-PG70	60" x 36"	<.10	15.04	.33-.45	.19-.29	41-43	33-34
Project-In	E600	3 1/4"	AW100	60" x 36"	<.10	15.04	.32-.48	.12-.26		
Single Hung	E300	3 1/4"	CW-PG50	56" x 91"	<.30	7.52	.35-.40	.13-.30		
	E500	3 1/4"	AW-PG40	60" x 99"	<.30	8.15	.37-.42	.13-.46		
	H650/H655	4 1/8"	AW-PG60	60" x 99"	<.30	12			31-32	24-26
	T500	3 1/4"	AW-PG50	60" x 99"	<.30	12	.37-.42	.14-.33		
Double Hung	E300	3 1/4"	CW-PG50	47" x 59"	<.30	7.52	.35-.40	.13-.30	34-36	28-31
	E500	3 1/4"	AW-PG40	60" x 99"	<.30	8.15	.37-.42	.13-.46		
Horizontal Slider	E300	3 1/4"	CW-PG50	72" x 60"	<.30	7.52	.35-.40	.14-.31		
	E500	3 1/4"	AW-PG50	99" x 79"	<.30	10.03	.36-.41	.13-.48	33	28
	K200	2 3/8"	CW-PG40	72" x 60"	<.30	6.06	.38-.44	.14-.33	47-51	35-39
Fixed	C600/C605	4 1/8"	AW-PG100	60" x 99"	<.10	15.04	.14-.44	.13-.57	30-40	30
	E300	3 1/4"	AW-PG50/CW70	60" x 99"	<.10	10	.25-.48	.16-.37		
	E500	3 1/4"	AW-PG50/CW70	60" x 99"	<.10	10	.25-.48	.16-.37		
	E600	3 1/4"	AW-PG100	60" x 99"	<.10	15.04	.25-.44	.16-.37		
	H450	3 1/4"	AW-PG110	72" x 120"	<.10	15.04	.26-.50	.16-.69		
	H650	4 1/8"	AW-PG90	60" x 99"	<.10	15.04				
	K200	2 3/8"	CW50	64" x 71"	<.30	7.52	.27-.32	.16-.37		
	M600	3 1/4"	AW-PG50	60" x 99"	<.10	12.11	.18-.32	.23-.36	32-41	26-33
Terrace Door (inswing)	M600/M605	4 1/2"	AW50	48" x 96"	<.30	10.03	.35-.39	.13-.43		
Terrace Door (outswing)	M600/M605	4 1/2"	AW70	48" x 96"	<.30	12.11	.37-.42	.13-.43	34-43	30-33
Terrace Door (outswing)	M600/M605 (w/ADA threshold)	4 1/2"	AW50	48" x 96"	<.30	10.03	.37-.42	.13-.43		

*-Ranges based on multiple Low-E/Argon I.G. combinations

^x-Ranges based on multiple I.G. combinations

All ratings listed are NAFS certified. Periodic re-certification testing is required thus data shown may vary slightly.

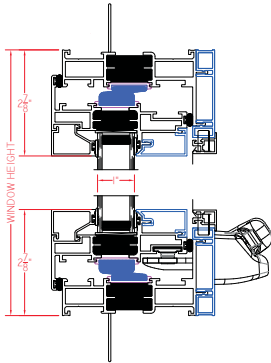
Aluminum Products

Series and Models

Casement

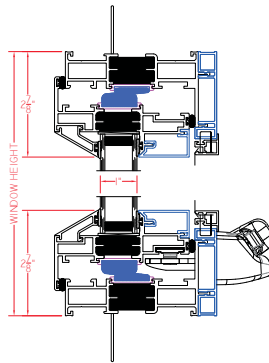
C600 Series

Shown with nailing fin, roto hardware, and modern, square exterior glazing



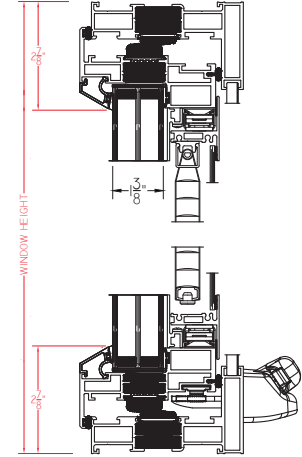
C605 Series

Shown with nailing fin, roto hardware, and traditional, sloped exterior glazing



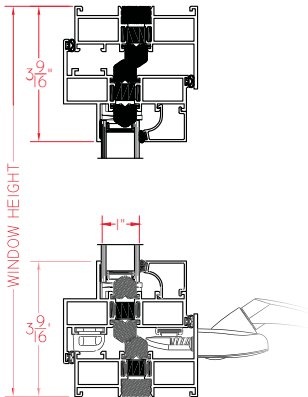
C605 Series with blinds/panel

Shown without nailing fin, with optional triple-pane I.G., roto hardware, & beveled exterior glazing



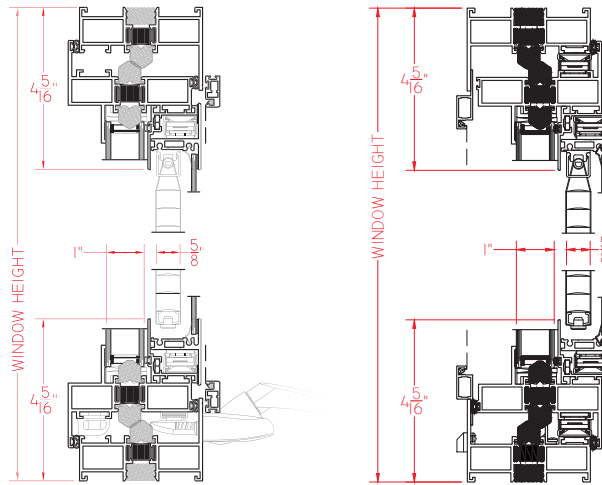
E600 Series

Shown with roto hardware



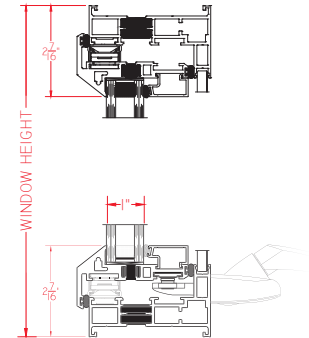
E600 Series with blinds/panel

Outswing model Inswing Model
shown without nail fin, with roto hardware



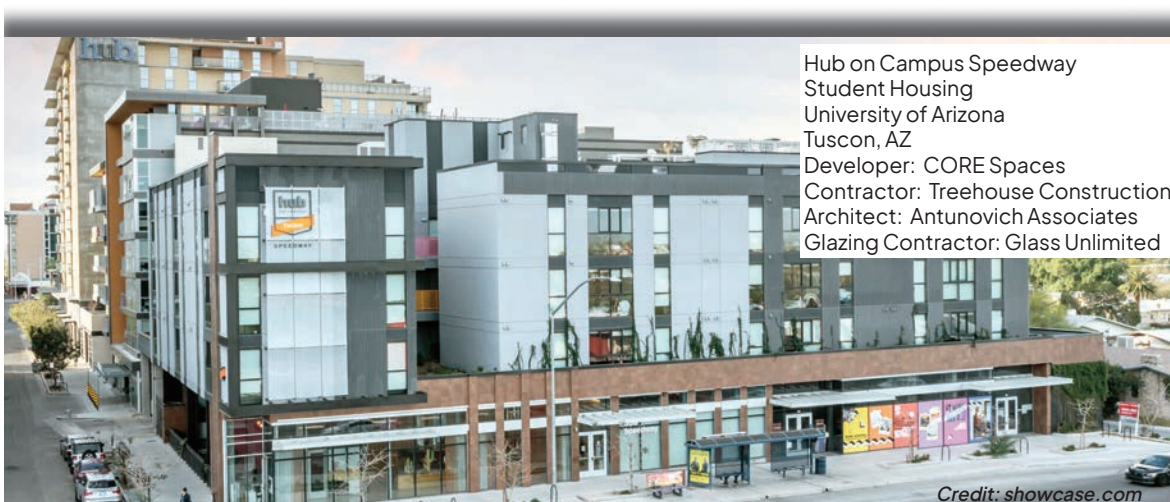
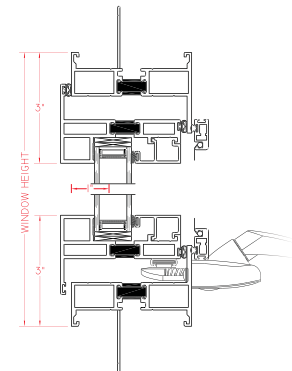
H450 Series

Shown with roto hardware



M600 Series

Shown with roto hardware and optional nailing fin



Hub on Campus Speedway
Student Housing
University of Arizona
Tucson, AZ
Developer: CORE Spaces
Contractor: Treehouse Construction
Architect: Antunovich Associates
Glazing Contractor: Glass Unlimited

Credit: showcase.com

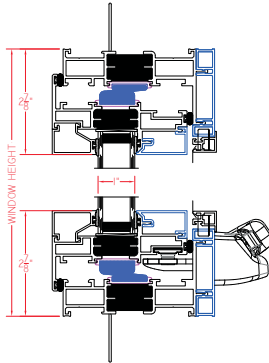
Aluminum Products

Selection Guide

Project-Out

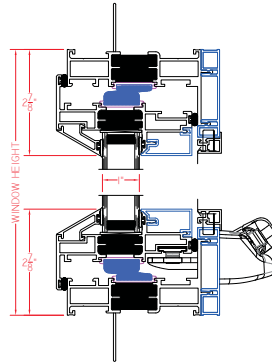
C600 Series

Shown with nailing fin, roto hardware, and modern, square exterior glazing



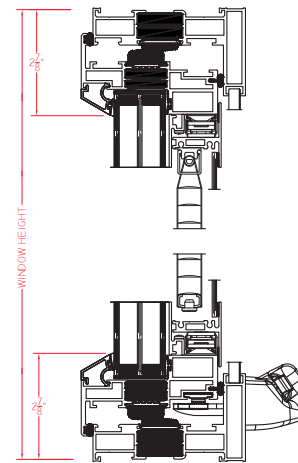
C605 Series

Shown with nailing fin, roto hardware, and beveled exterior glazing



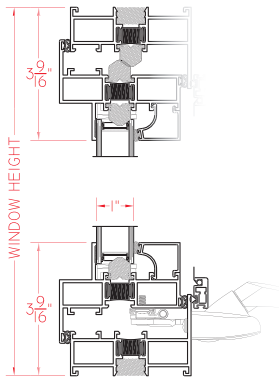
C605 Series with blinds/panel

Shown without nailing fin, triple-pane I.G., roto hardware, and beveled exterior glazing



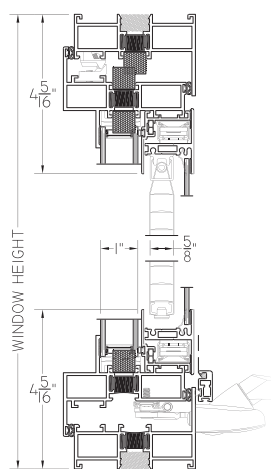
E600 Series

Shown with 4-bar roto hardware



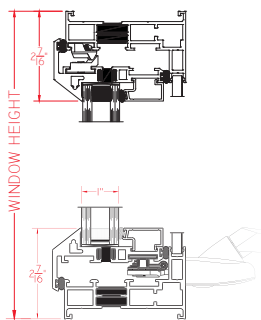
E600 Series with blinds/panel

Shown with roto hardware



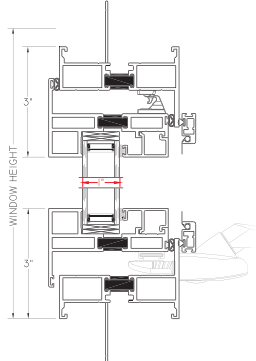
H450 Series

Shown with roto hardware

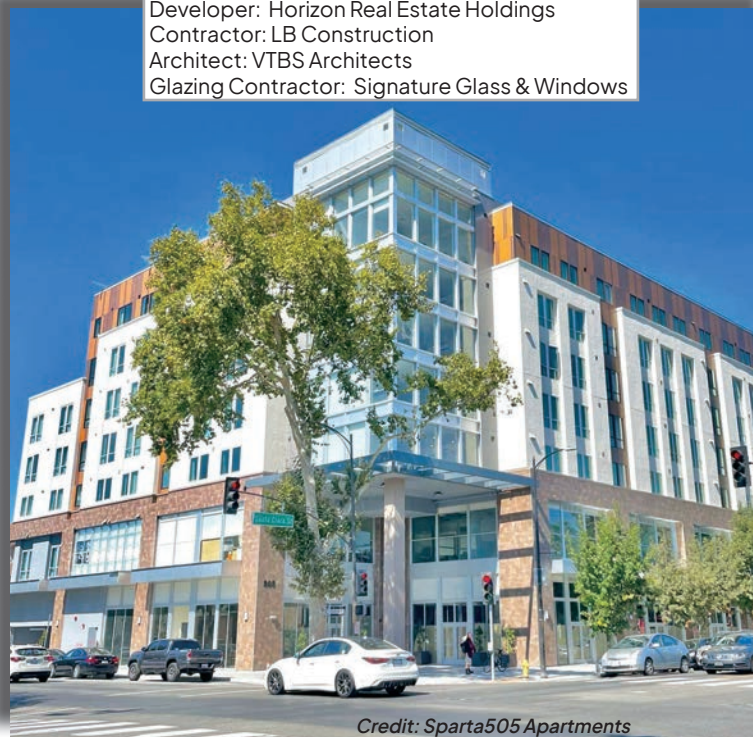


M600 Series

Shown with 4-bar roto hardware and nail fin



Sparta 505
 Student Housing
 San Jose State University
 San Jose, CA
 Developer: Horizon Real Estate Holdings
 Contractor: LB Construction
 Architect: VTBS Architects
 Glazing Contractor: Signature Glass & Windows



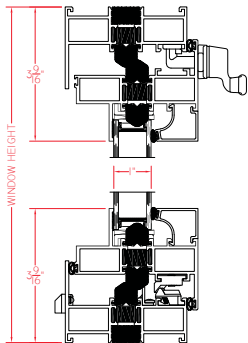
Credit: Sparta505 Apartments

Aluminum Products

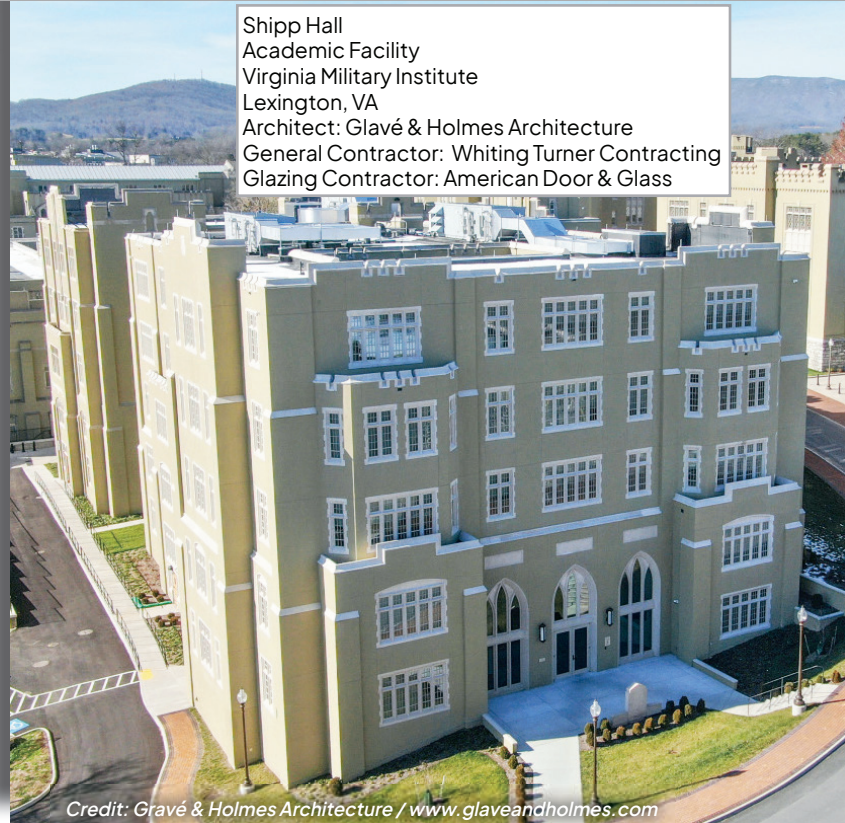
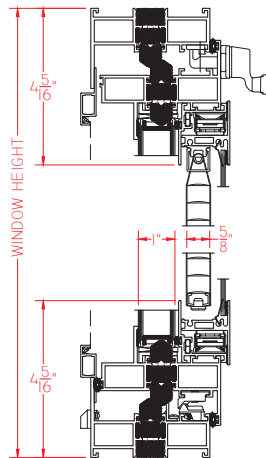
Selection Guide

Project-In

E600 Series



E600 Series with blinds/panel



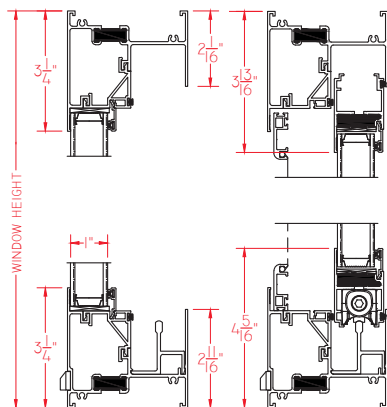
Shipp Hall
Academic Facility
Virginia Military Institute
Lexington, VA
Architect: Glavé & Holmes Architecture
General Contractor: Whiting Turner Contracting
Glazing Contractor: American Door & Glass

Credit: Glavé & Holmes Architecture / www.glaveandholmes.com

Horizontal Slider

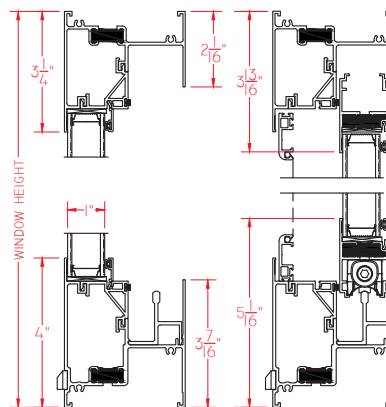
E300 Series

Single Slider model shown



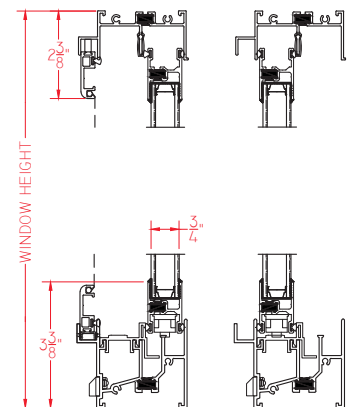
E500 Series

Single Slider model shown



K200 Series

Single Slider model shown

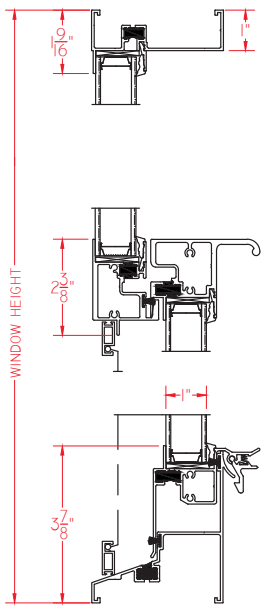


Aluminum Products

Selection Guide

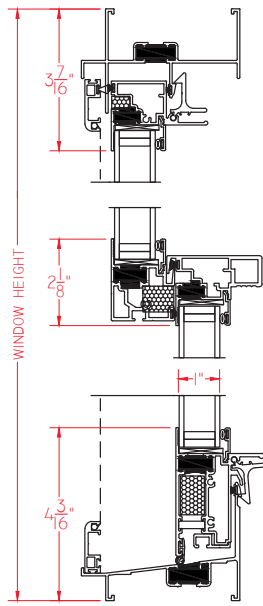
Single Hung/Double Hung

T500 Series



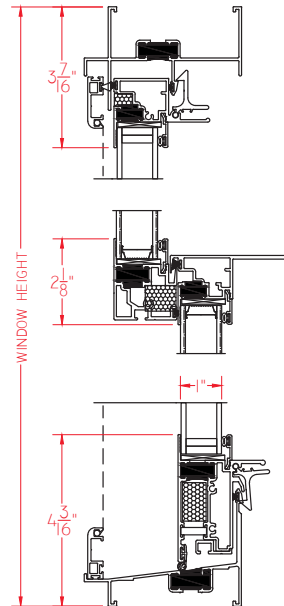
E300 Series

Double Hung model shown

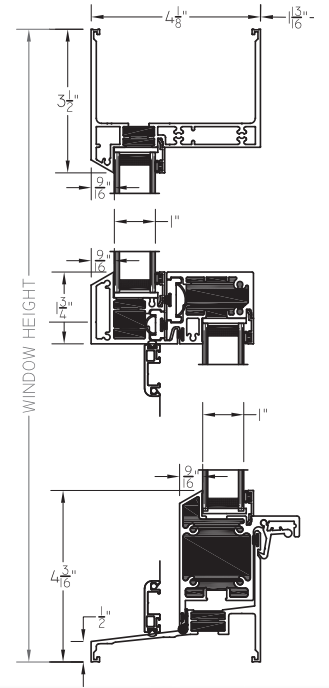


E500 Series

Double Hung model shown



H650 Series



Verve West Lafayette
 Student Housing
 Purdue University
 West Lafayette, IN
 Developer: Subtext
 Architect: WDG Architecture
 Contractor: Brinkman Constructors
 Comm. Window Dist.: G2 Architectural
 Credit: vervewestlafayette.com

800-347-0438



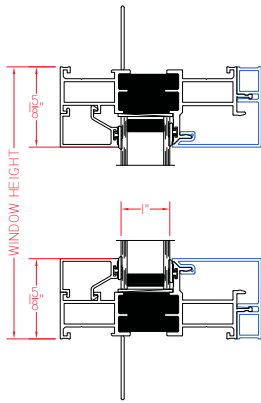
Aluminum Products

Selection Guide

Fixed

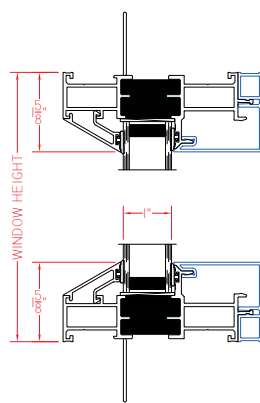
C600 Series

Shown with nailing fin and modern, square exterior glazing



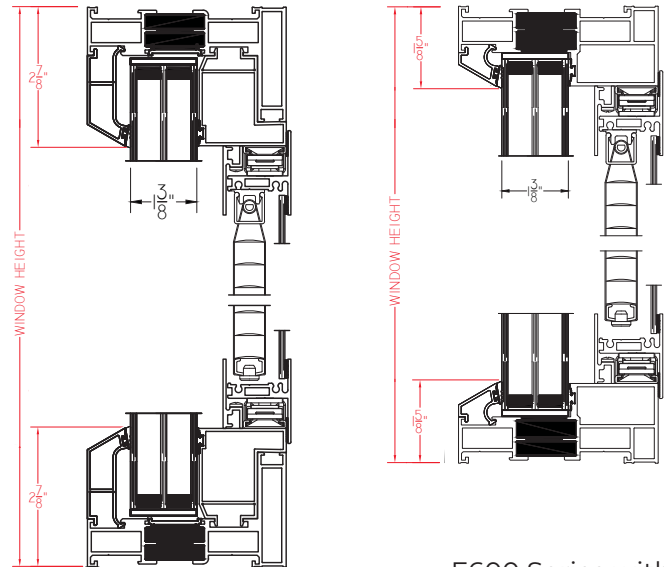
C605 Series

Shown with nailing fin and traditional, sloped exterior glazing

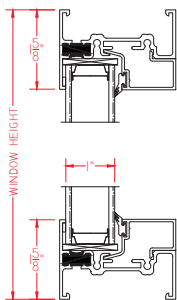


C605 Series with blinds/panel

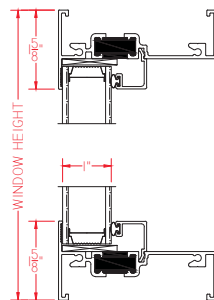
Wide Rail
Narrow Rail
Shown with traditional sloped exterior glazing, and optional triple pane I.G.



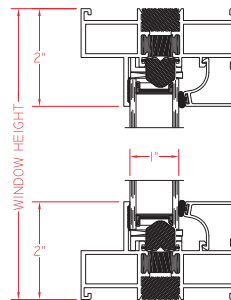
K200 Series



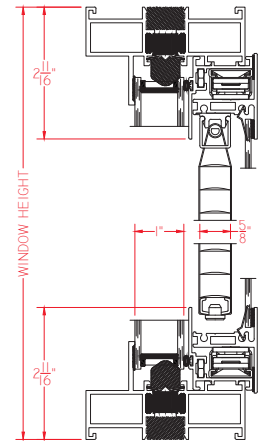
E300 Series



E600 Series

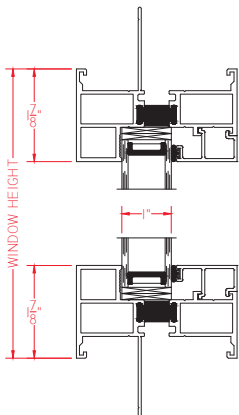


E600 Series with blinds/panel

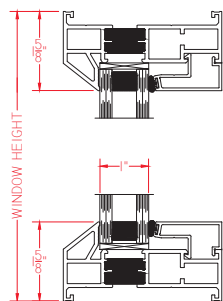


M600 Series

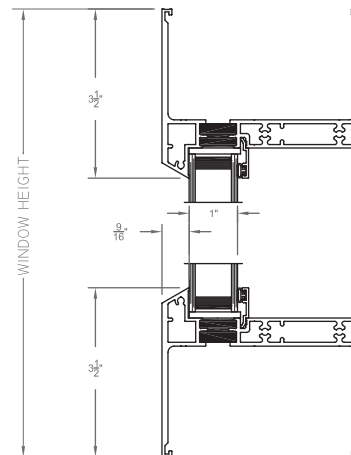
Shown with optional nailing fin



H450 Series



H650 Series

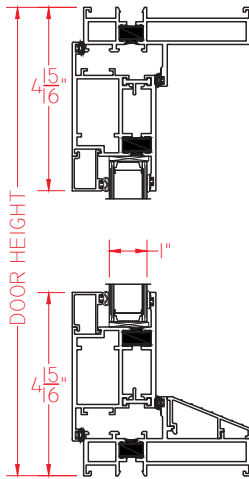


Aluminum Products

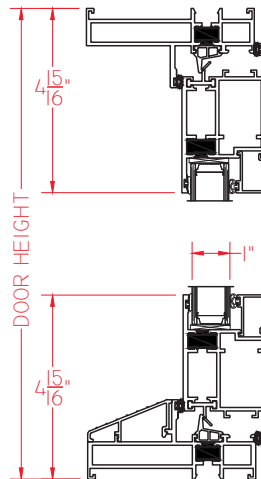
Selection Guide

Terrace Doors (Standard Sill)

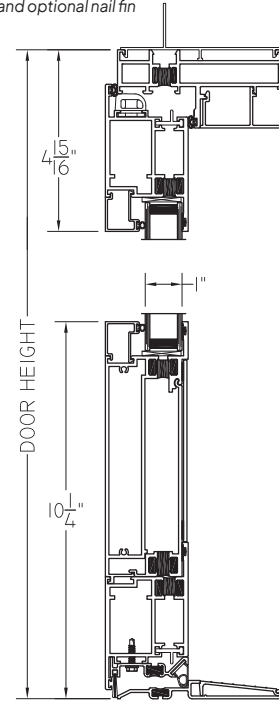
M600 Outswing Series
Shown with standard 2 1/8" sill



M600 Inswing Series
Shown with standard 2 1/8" sill



M600 Outswing Series
Shown with ADA threshold, 10" bottom rail,
and optional nail fin



Fulton Place
Student Housing/Mixed-Use
Grand Valley State University
Grand Rapids, MI
Architect: Progressive AE
Contractor: Rockford Construction
Glazing Contractor: Vos Glass, Inc.

Credit: Rockford Construction

Vinyl Windows and Doors

Hung | Casement | Project-Out | Slider | Fixed | Doors



Woodland Glen Phase IV
Student Housing
University of Kentucky
Lexington, KY
Architect: Sherman Carter Barnhart
Contractor: Messer Construction
Glazing Contractor: Kidd Glass, Inc.



Credit: Phebus Photography

FEATURES:

- LC to CW Ratings
- 100% pure uPVC vinyl
- Fusion welded corners
- .060 Vinyl thickness
- Metal reinforcements in critical areas
- Amesbury/Truth® operating hardware
- Block & Tackle balancers on all hung units
- ¾" to 1¾" I.G. with warm-edge spacer
- Full line of operating and fixed window models
- Sliding and Terrace Door models
- Product lines perfect for both New Construction and Replacement application

BENEFITS:

- Value added alternative to traditional aluminum windows
- Industry-leading thermal efficiencies
- Green initiatives built into every product
- Impact and Florida Building approved products
- Great STC/OITC performance
- Custom painted exterior color capabilities*
- Standard and custom sizing for all models

*-Availability may vary



www.QuakerCommercialWindows.com

Vinyl Product Selection Guide

Model	Series	Frame Depth	Structural Test Rating	Test Size	Air Infiltration	Water Resistance	U-Value Range [#]	SHGC Range [#]	STC Range ^x	OITC Range ^x
Casement	V250	3 1/4"	LC30	32" x 60"	<.30	5.43	.21-.32	.11-.43		
	V300	3 1/4"	CW50	36" x 78"	<.30	7.5	.17-.28	.11-.27	34-41	29-34
Project-Out	V250	3 1/4"	LC35	48" x 32"	<.30	5.43	.22-.47	.12-.28		
	V300	3 1/4"	CW50	60" x 32"	<.30	7.5	.24-.47	.11-.41	35	29
Single Hung	V250	3 1/4"	LC35	36" x 84"	<.30	7.5	.25-.48	.14-.51	29-35	24-29
	V300	3 1/4"	CW50	56" x 91"	<.30	7.5	as low as 0.25	as low as 0.25	32-34	26-29
Double Hung	V250	3 1/4"	R50	36" x 84"	<.30	7.5	.23-.33	.14-.50		
Horizontal Slider	V250	3 1/4"	R40	63" x 44"	<.30	7.5	.23-.51	.14-.50	29-31	24-28
	V300	3 1/4"	CW50	71" x 60"	<.30	7.5	as low as 0.25	as low as 0.25	32-34	26-29
Fixed	V250	3 1/4"	LC35	56" x 56"	<.30	5.43	.21-.32	.15-.53		
	V300 (wide rail)	3 1/4"	CW50	72" x 84"	<.30	7.5	.14-.46	.13-.49	35	29
	V300 (narrow rail)	3 1/4"	CW50	78" x 78"	<.30	7.5	.21-.46	.11-.55		
Sliding Door	V250	5 5/8"	R50	72" x 82"	<.30	7.5	.17-.30	.12-.51		
Swing Door	3 1/4"	3 1/4"	CW50	40" x 84"	<.30	7.5	as low as 0.24			

*-Ranges based on multiple Low-E/Argon I.G. combinations

^x-Ranges based on multiple I.G. combinations

All ratings listed are NAFS certified. Periodic re-certification testing is required thus data shown may vary slightly.



The Hive
 Student Housing
 University of Iowa
 Iowa City, IA
 Developer: Gilbane Development Corp.
 Contractor: Heartland Construction
 Commercial Window Dist.: LS Bldg. Supply

Render Credit:
 Gilbane Development /
 gilbaneco.com

800-347-0438

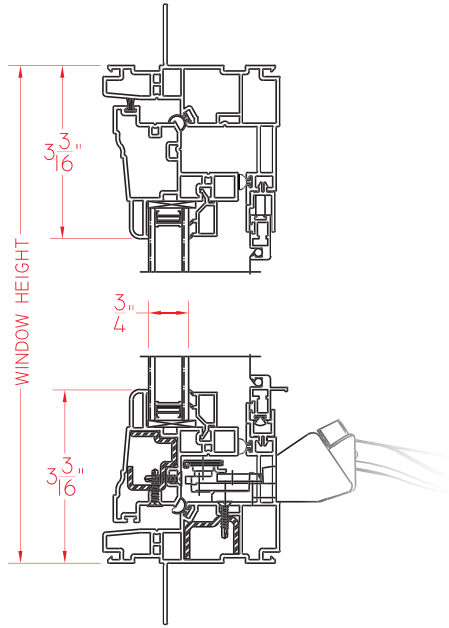


Vinyl Products

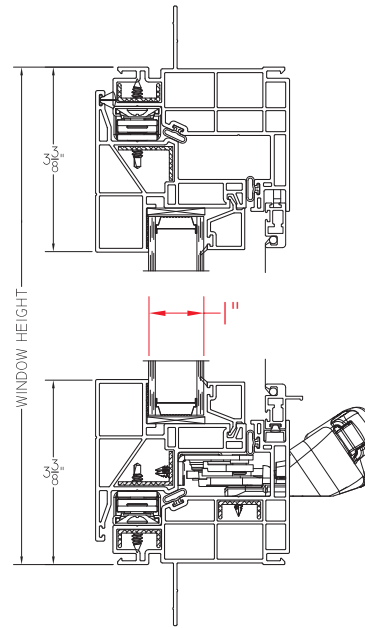
Selection Guide

Casement

V250 Series

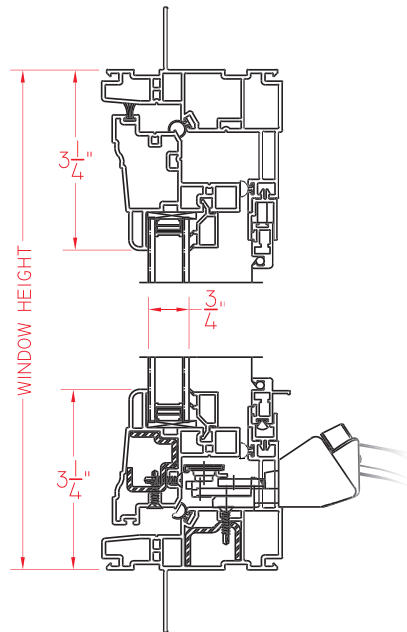


V300 Series

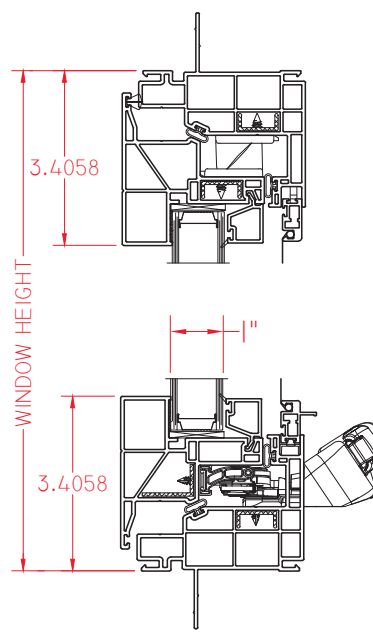


Project-Out

V250 Series



V300 Series



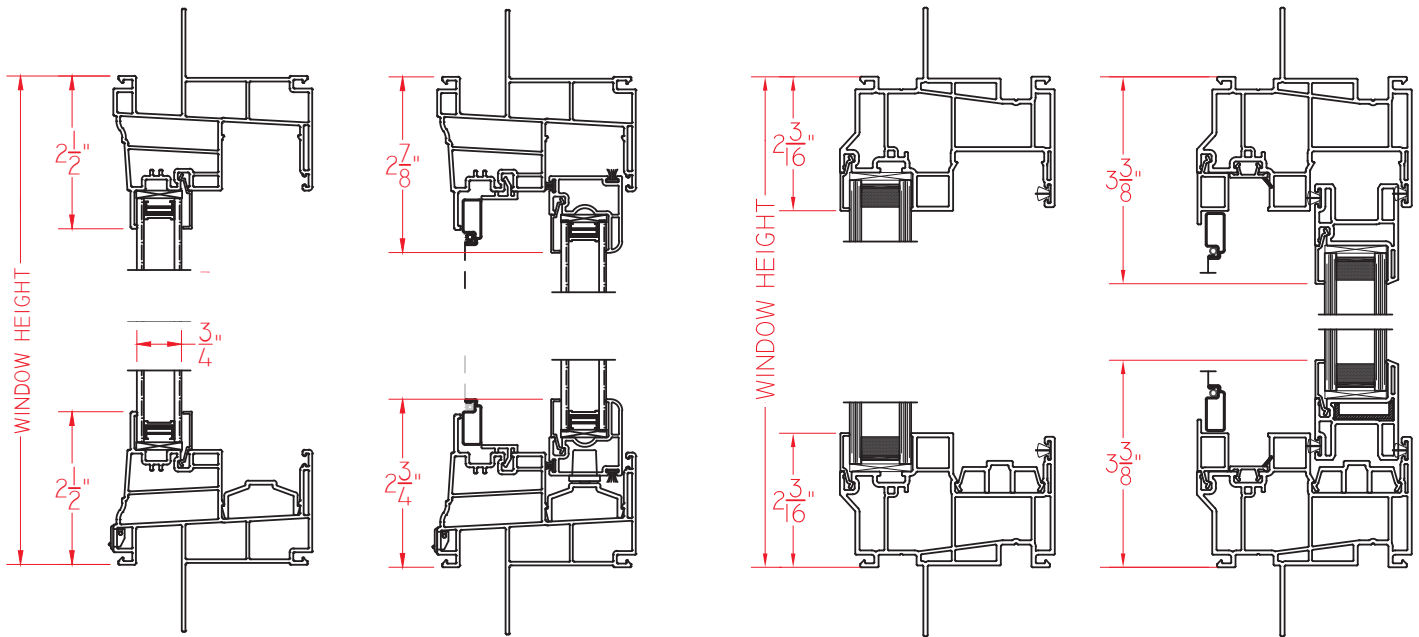
Vinyl Products

Selection Guide

Horizontal Slider

V250 Series

V300 Series



Entrepreneurship Living Learning Community
 Mixed-Use Facility
 Bowie State University
 Bowie, MD
 Architect: Design Collective
 Contractors: Balfour Beatty & Smoot Construction
 Glazing Contractor: Merit Commercial Windows



Credit: Prince George's Suite Magazine & Media

800-347-0438



BOWIE
STATE UNIVERSITY

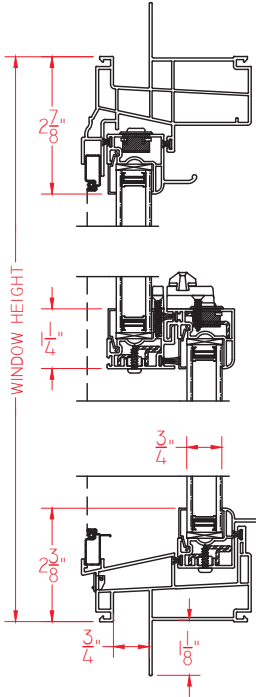
Vinyl Products

Selection Guide

Single Hung/Double Hung

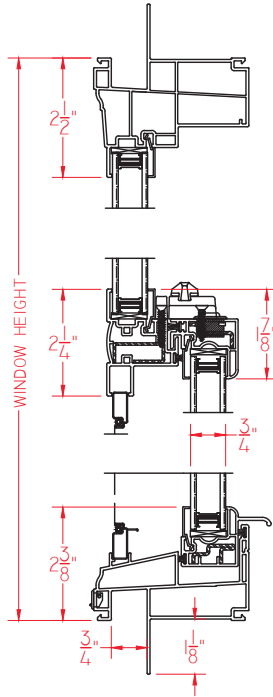
V250 Series

Double Hung model shown

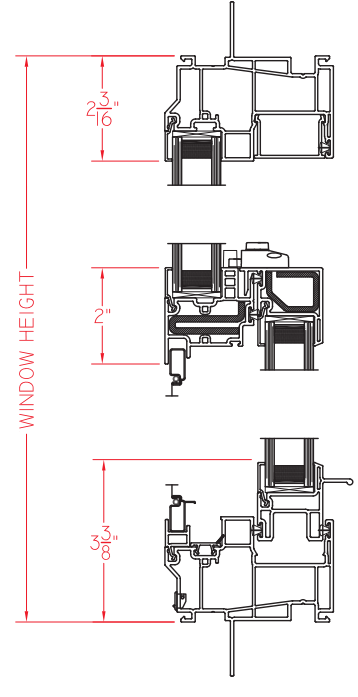


V250 Series

Single Hung model shown



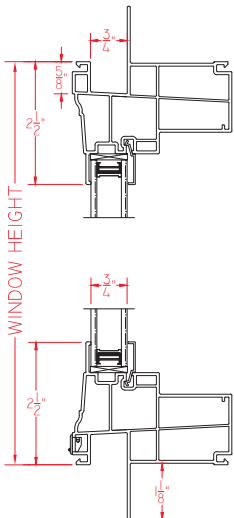
V300 Series



Fixed

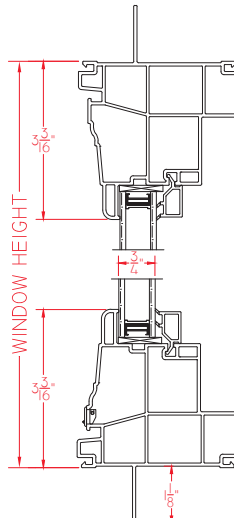
V250 Series

Sash set model to match all hung and horizontal sliding units



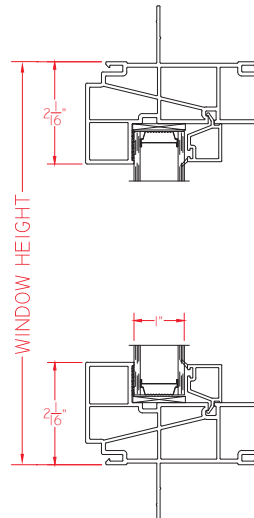
V250 Series

Sash set model to match all casement and project-out units



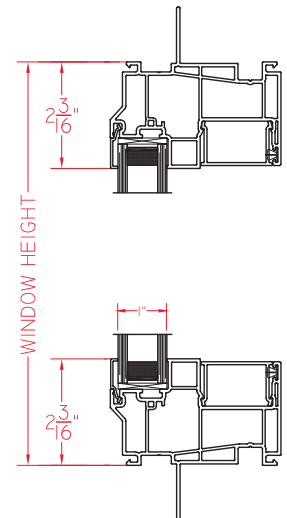
V300 Series

Sash set model to match all casement and project-out units



V300 Series

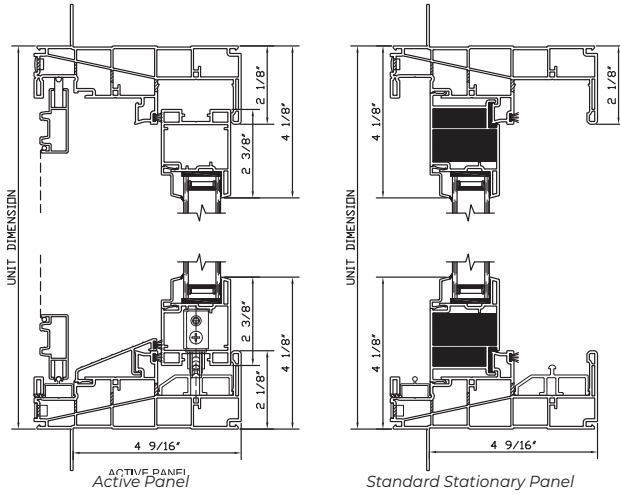
Sash set model to match all hung and horizontal sliding units



Vinyl Products Selection Guide

Sliding Door

V250 Series



McConnell Hall
 Student Housing
 The Ohio State University-Newark
 Newark, OH
 Architect: Design Group
 Contractor: Whiting Turner Contracting
 Comm. Window Dist.: Northern Window & Door



Credit: newark.osu.edu

Swing Door

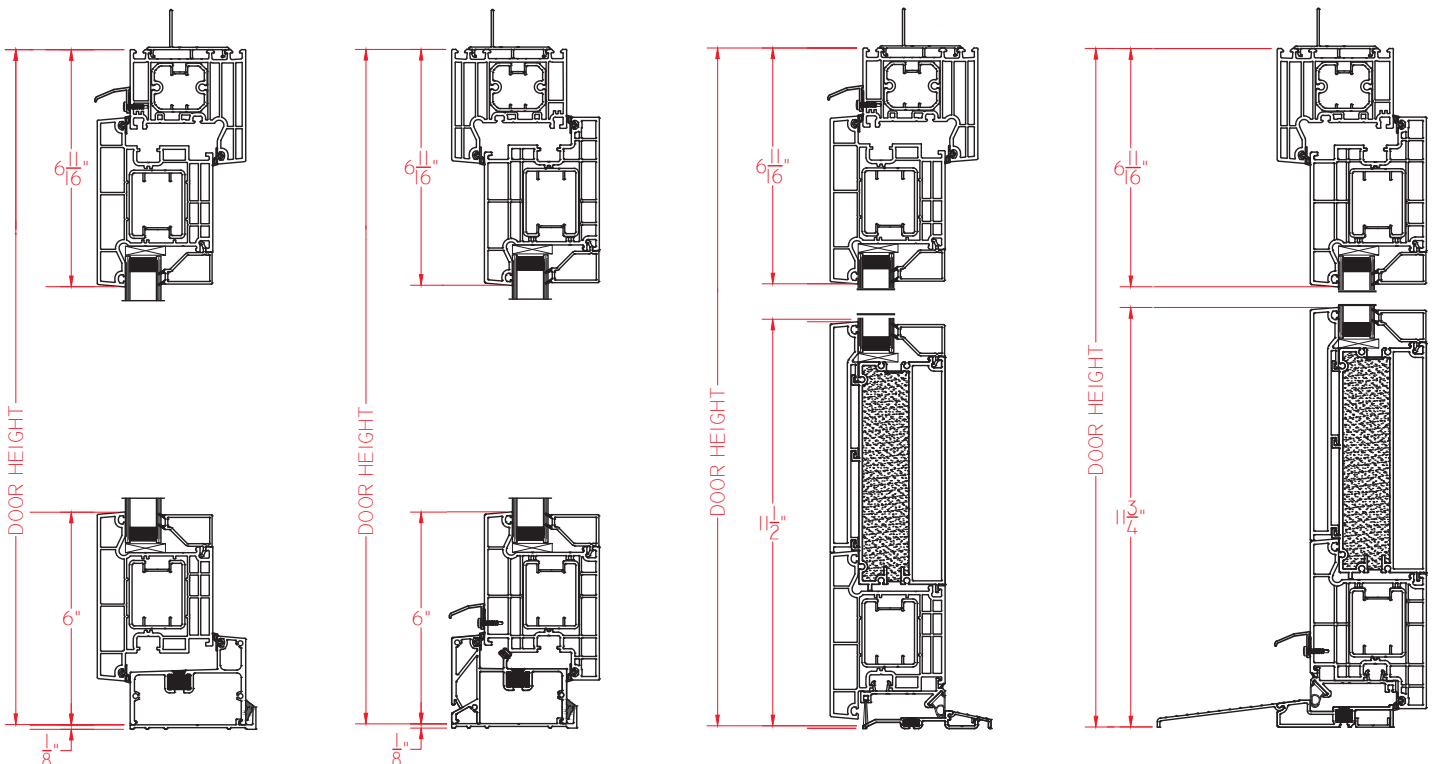
V300 Series

Outswing w/standard sill

Inswing w/standard sill

Outswing w/ADA sill

Inswing w/ADA sill



Options

Mulls and Accessories

Quaker mull systems deliver ultimate confidence, whether you're stacking units or pairing them side-by-side. Or both. In addition, Quaker has a multitude of accessories for both aluminum and vinyl products to provide a smooth and thorough install.

Aluminum

- Vertical and Horizontal Mull Systems. Factory-mulled* or sent loose for jobsite installation
- Receptors and Subsills
- Panning and break metal
- Anchor straps
- Interior and exterior trim
- Custom, job-specific accessory dies and more.

Vinyl

- Vertical and Horizontal Mull Systems. Factory mulled* or sent loose for jobsite installation
- Receptors
- Panning
- Casing
- Trim and jamb extensions and more.

Other factory-applied* options and accessories include:

Louver systems to accommodate HVAC, WOCDs (Window Operating Control Devices), Trickle Vent, and more.

**Size limitations may apply for factory-mulling and factory-applied options.*

Other limitations may apply to mulls/accessories (listed or not listed above) based upon several variables including, but not limited to, the window/door series chosen, and requested/required specifications.



Credit: Reese Chiles

Naismith Hall
Student Housing
University of Kansas
Lawrence, KS
Owner: Emet Capital Management LLC
Commercial Dealer: Timekey Enterprises



www.QuakerCommercialWindows.com

Options

Colors & Finishes



From white to black and everything in between, Quaker has the right color for your project. Add architectural flair through textured coatings. Deliver longevity with upgraded finishes.

For Quaker Aluminum Windows:

- Choose from nearly 40 “Quick-Pick” colors
- Custom Colors: Need a special look? That’s one of our specialties. Quaker’s custom color capabilities put any color at your fingertips.
- Finishes:
 - Standard Finish: FGIA 2604 Finish
 - Optional Upgrade: 2605 Finish is available for most colors*
 - Heat Reflective finishes*
- Class I Anodized is available upon request

**2605 and Heat Reflective finishes not available with all colors*

Aluminum Paint Warranty

- 10-year limited warranty on 2604 paint finish
- 15-year limited warranty on 2605 paint finish
- 5-year limited warranty on Anodized finishes

For Quaker Vinyl Windows:

- Pure uPVC in White or Sandstone colors
- Painted Vinyl: Exterior only. Quaker’s painted vinyl affords a color palette which far exceeds traditional expectations because of an ability to produce any custom color you have in mind.
- Standard Finish: FGIA 615-05 for all painted vinyl colors
- High-Performance Laminate Coatings: Laminate coatings, which are in accordance to RAL GZ 716/1, can be used on the exterior of all vinyl products. For a limited amount of Quaker’s vinyl windows, laminate can be added to the interior too.

Vinyl, Vinyl Paint and Vinyl Laminate Warranty

- 10-year limited warranty on vinyl colors, painted exteriors and laminate coatings.

See complete warranty details at QuakerCommercialWindows.com

Pennypacker Hall
Student Housing
Penn State University
State College, PA
Architect: Mackey Mitchell Architects
Contractor: Clayco
Glazing Contractor: Nittany Building Spec.



Credit: Barton Associates Consulting Engineers / ba-inc.com

800-347-0438



Options Glass

Whether glass specs call out thermal values, special tints, sound control, or safety necessities - or a combination of some or all - Quaker has the products and the know-how to accommodate.

Pane thickness:

- $\frac{3}{32}$ "
- $\frac{1}{8}$ "
- $\frac{5}{32}$ "
- $\frac{3}{16}$ "
- $\frac{1}{4}$ "
- $\frac{5}{16}$ "

I.G. thickness:

- $\frac{3}{4}$ " (Double pane)
- 1" (Double pane)
- $1\frac{3}{8}$ " (Triple pane)

Glass Types:

- Dual Silver Low-E
- Triple Silver Low-E
- Interior Pane Low-E
- Tempered Safety Glass
- Laminated
- Spandrel
- Solar-Cooled
- Obscure (for privacy)
- Tinted
- Mirror

and many others

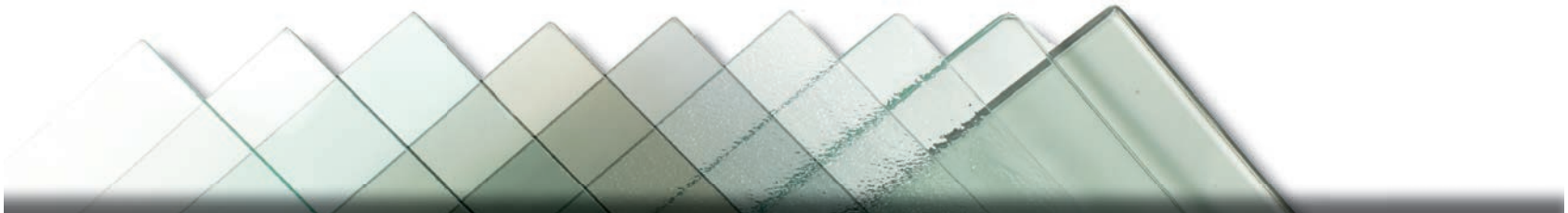
Some limitations may apply based upon several variables including, but not limited to, the window/door series chosen and requested/required specifications.

Specialty Choices:

- Insulated Panels
- Blinds/Panel

Eco-Friendly Choices:

- Bird Glass
- Turtle Glass



Vernier Science Center
Academic Facility
Portland State University
Portland, OR
Contractor: Skanska USA Building
Architect: Bora Architecture & Interiors
Glazing Contractor: Encore Glass LLC

Render Credit: Bora Architecture / bora.co



QUAKER
COMMERCIAL WINDOWS

www.QuakerCommercialWindows.com

Options

Grids

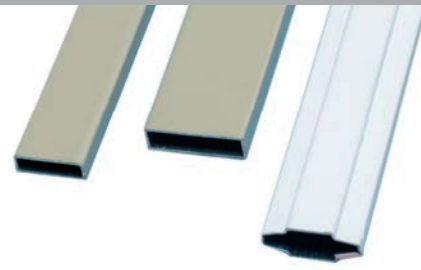
Simulated Divided Lites (SDL)



- For Aluminum and Vinyl products
- Numerous profiles and combinations available (1/2" to 3 3/4" wide)*

Shown are a small sampling of the many SDL grid profiles Quaker has available.

Grids Between the Glass (GBG)



- For Aluminum and Vinyl products
- Flat (5/8", 3/4" or 1" wide)*
- Contoured (3/4" wide)*

**Some usage limitations may apply*

Garvey Dining Hall
Multi-Use Facility
Catholic University
Washington DC
General Contractor: Manhattan Construction
Architect: Perkins Eastman
Glazing Contractor: Merit Commercial Windows



Credit: Mueller Associates Engineering / muellerassoc.com

Quaker

Support Services

Quaker's expertise and support services are unmatched in the industry. While every project is distinct, Quaker offers in-house processes which consistently cover every detail. These fool-proof procedures ensure your project and our products are a perfect match.

- Quaker has a dedicated commercial team with more than 150 years of industry experience
- Quaker's team will assist with every facet; design development, budgetary aspects, and project management



PROJECT AND SPECIFICATION REVIEW

How many stories are in the building?
Where is it located?
How large are the windows?
These and other important questions must be answered before moving forward.



ENGINEERING & DESIGN ASSESSMENT

After evaluating every component making up your project, our professional engineering expertise is put to work, as we carefully calculate customized solutions to best meet your spec's requirements.



LOCAL AND ARCHITECTURAL SALES SUPPORT

Quaker's Sales Representatives, many with 25+ years of knowledge and industry pedigree, have a vested interest in working beside you...not from afar. If you have questions, they want to answer them. If you have a concern, it's their concern too.





Lark Austin
Student Housing
University of Texas
Austin, TX
Developer: Parallel Company
Architect: Rhode Partners
Glazing Contractor: McInerney & Assoc.

Credit: The Scion Group

Special Applications

with defined expectations. Quaker has solutions.

Impact

- Products that meet ASTM1886 (Large Missile Impact - Level D) testing requirements
- Aluminum and Vinyl Windows
- Casement, Project-Out, Horizontal Slider and Fixed models
- Aluminum Sliding and Terrace Doors
- Various anchorage systems based on product



Florida Building Code

- Multiple products that meet all required FBC calculations
- Aluminum and Vinyl Windows
- Casement, Project-Out, Horizontal Slider and Fixed models
- Aluminum Sliding and Terrace Doors
- Approved anchorage systems
- See full information at FloridaBuilding.org



Graham Hall
Student Housing
Mississippi Gulf Coast Community College
Perkinston, MS
Contractor: Mac's Construction Company
Architect: EGH Architects
Glazing Contractor: Sumrall Glass Company



Credit: Mississippi Gulf Coast Community College / mgccc.edu



www.QuakerCommercialWindows.com

Special Applications

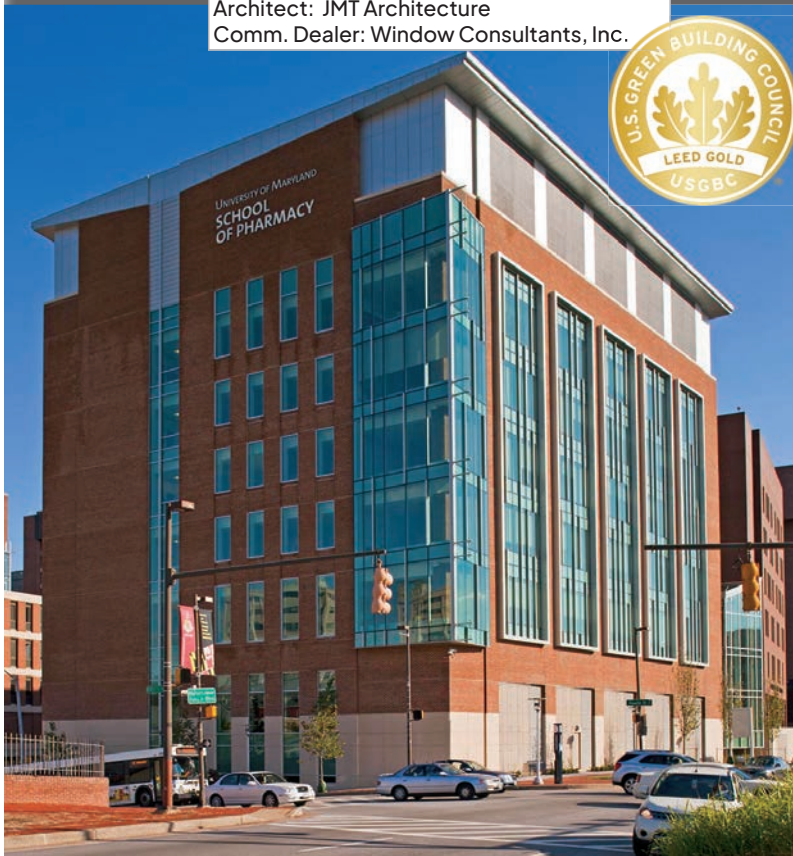
with defined expectations. Quaker has solutions.

LEED®



- Operating and fixed models can assist with garnering LEED points for your higher education project
- LEED Building Design and Construction (LEED BD+C) works for both new construction and replacement commercial projects
- World's preeminent green building organization

School of Pharmacy
Academic Facility
University of Maryland
Baltimore, MD
Contractor : EMJAY Engineering & Const. Co.
Architect: JMT Architecture
Comm. Dealer: Window Consultants, Inc.



Credit: JMT Architecture/jmtarchitecture.com

Historical Replication

- Strong history of working with National Park Service's Historic Preservation division
- Hung, Casement, Project-Out, Fixed, and Floating Operator models
- Aluminum windows with historically accurate sight lines and beveled frames
- Standard or customized panning and installation accessories to achieve a completely faithful window renovation
- Patented technology
- Historical windows that can help your higher education project secure Federal &/or State tax credits

Ryerson Hall
Academic Facility
NW Oklahoma State University
Alva, OK
Contractor: ATG Construction, Inc.
Architect: Easley Associates Architects
Comm. Window Distributor: Starr Lumber



Credit: NW Oklahoma State University PR Department

References

See more of Quaker in completed projects on these campuses

ALABAMA

Troy University - Troy
Tuskegee University - Tuskegee

ARKANSAS

Arkansas Baptist College - Little Rock
John Brown University - Siloam Springs
Southern Arkansas University - Magnolia

CALIFORNIA

Cal-State University - Northridge
Vanguard University - Costa Mesa

CONNECTICUT

University of Connecticut - Storrs

ILLINOIS

University of Chicago - Chicago
University of Illinois - Champaign
Wheaton College - Wheaton

INDIANA

Calumet College of St. Joseph - Whiting
Earlham College - Richmond
Holy Cross College - South Bend
Indiana University - Bloomington
Marian University's Ancilla College - Plymouth
Taylor University - Upland
Trine University - Angola

IOWA

Iowa State University - Ames

KANSAS

Ottawa University - Ottawa
Washburn University - Topeka

KENTUCKY

Berea College - Berea

LOUISIANA

Louisiana Tech - Ruston

MARYLAND

Maryland Institute College of Art - Baltimore

MICHIGAN

Saginaw Valley State University - Saginaw

MISSISSIPPI

Millsaps College - Jackson
Mississippi College - Clinton
Mississippi State University - Starkville
Northwest Community College - Senatobia
William Carey University - Hattiesburg

MISSOURI

Central Methodist University - Fayette
Culver-Stockton College - Canton
Harris-Stowe State University - St. Louis
University of Missouri - Columbia
Missouri State University - Springfield
Missouri Univ. of Science & Technology - Rolla
Moberly Area Community College - Moberly
Southeast Missouri State University - Cape Girardeau
Stephens College - Columbia
Washington University - St. Louis

NEBRASKA

Chadron State College - Chadron
Metro Community College - Omaha

NEW JERSEY

Rutgers University - Newark

NEW YORK

Colgate University - Hamilton
Stony Brook University - Stony Brook



Interdisciplinary Stem Education Building
Academic Facility
University of Georgia
Athens, GA
Architect: HOK
Contractor: Holder Construction
Glazing Contractor: Custom Enclosure Solutions

Credit: Holder Construction



Founders Hall / Innovation Quad II
 Academic Facility
 Elon University
 Elon, NC
 Architect: Walter Robbs Architects
 Contractor: Samet Corporation
 Commercial Dealer: Carolina Classic Windows

Credit: Elon University / elon.edu

NORTH CAROLINA

Meredith College - Raleigh
 North Carolina State University - Raleigh
 Western Carolina University - Cullowhee

OHIO

University of Dayton - Dayton
 Kenyon College - Mt. Vernon
 Oberlin College - Oberlin
 Ohio University - Athens
 Ohio Dominican University - Columbus
 The Ohio State University - Newark
 University of Toledo - Toledo

OKLAHOMA

University of Oklahoma - Norman

OREGON

Oregon State University - Corvallis

PENNSYLVANIA

Carnegie Mellon University - Pittsburgh
 Juniata College - Huntingdon
 University of Pittsburgh - Bradford
 Shippensburg University - Shippensburg
 Washington & Jefferson College - Washington

SOUTH CAROLINA

Converse University - Spartanburg

TENNESSEE

American Baptist College - Memphis
 East Tennessee State Univ. - Johnson City
 Emory & Henry College - Johnson City
 Freed-Hardman University - Henderson
 University of Memphis - Memphis
 Middle Tennessee State Univ. - Murfreesboro
 Milligan College - Johnson City
 University of Tennessee - Martin

TEXAS

Texas College - Tyler

VIRGINIA

George Mason University - Fairfax
 Hampton University - Hampton
 James Madison University - Harrisonburg
 Virginia Commonwealth University - Richmond

WASHINGTON DC

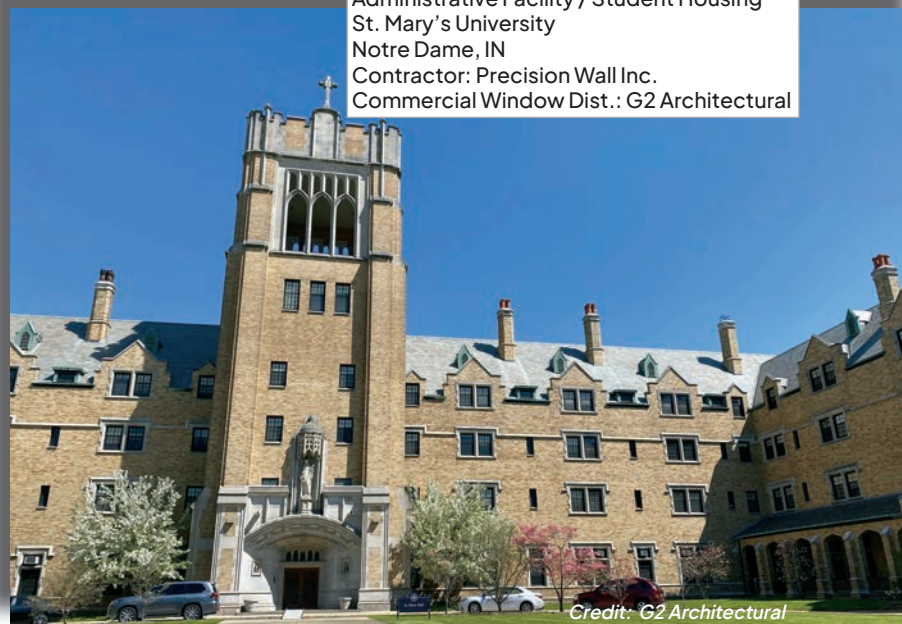
The George Washington University
 Georgetown University

WEST VIRGINIA

Marshall University - Huntington

WISCONSIN

Marquette University - Milwaukee
 University of Wisconsin - Madison



LeMans Hall
 Administrative Facility / Student Housing
 St. Mary's University
 Notre Dame, IN
 Contractor: Precision Wall Inc.
 Commercial Window Dist.: G2 Architectural

Credit: G2 Architectural




UNIVERSITY/COLLEGE

Find more information on Quaker windows and doors



 www.QuakerCommercialWindows.com

 1-800-347-0438

 commercial@quakerwindows.com



Made in America: All Quaker products are designed and manufactured in the United States at our state-of-the-art facilities in Eldon, MO (above) and Freeburg, MO.



April, 2024 V2



On the Cover:

Rev Northgate
Student Housing
Texas A & M University
College Station, TX
Developer: Parallel Co.
Architect: Rhode Partners
Contractor: Rogers-O'Brien Construction Co.
Glazing Contractor: Binswanger Enterprises

Quaker Window Products reserves the right to change or discontinue any products or options within this brochure without notice.